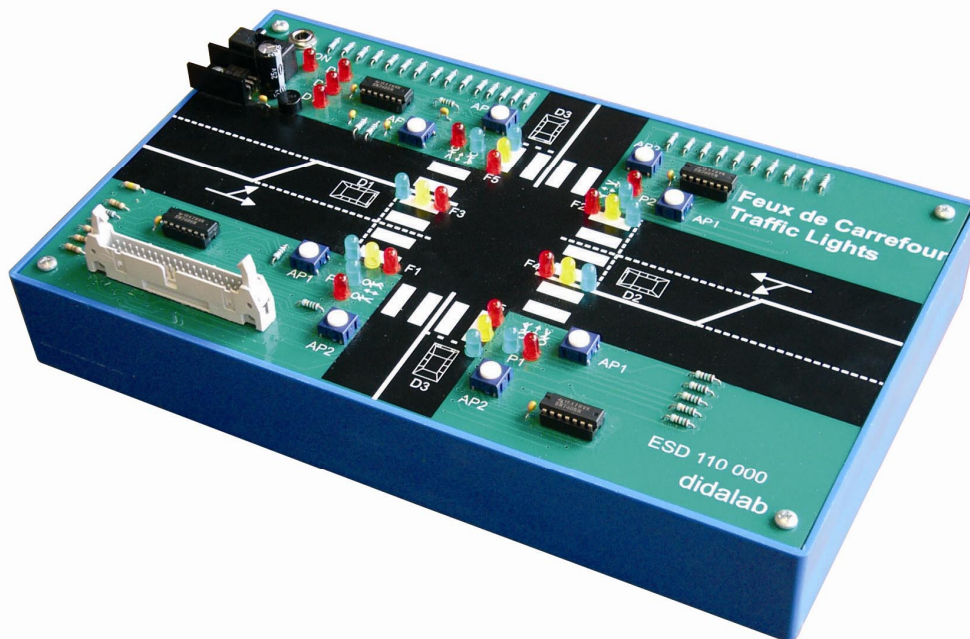


Traffic Lights Simulator

EID – 002



GENERAL CHARACTERISTICS :

The **EID 002** system is a traffic light simulator.

It has 24 ON/OFF Inputs / Outputs and can be connected to any board of the EID 100 (8 bits) and EID 200 ranges (16/32 bits), in using the 24 bits parallel port.

This module enables the carrying out of very progressive programs, from the Assembler to the C language, as well as the use of a real time monitor.

Its operation flexibilities allow the implementation of progressive computer science notions :

- ◆ Programming and use of an I/O port,
- ◆ Temporization loops,
- ◆ Use of subprograms,
- ◆ Interruption management,
- ◆ Use of real time monitor...

TOPICS :

The Experiments Manuals :

1 Trainer's volume EID 212 040,
1 student's volume EID 212 050,
enable the study of the following topics :

- ◆ Yellow light flashing,
- ◆ Alternate continuous operation on both roads (Green, Yellow, Red),
- ◆ Restricted mode operation, with permanent green light on the main road, and red lighting after car detection on the secondary road,
- ◆ Medium mode operation, with permanent green light on the main road, then taking into account pedestrian call and car detection on the secondary road,
- ◆ Full operation, with permanent green light on the main road, and state changing, after :
Pedestrian call, detection on left slip road and secondary road.

AREAS OF APPLICATIONS :

- ◆ Professional Technical Schools,
- ◆ Technical Colleges & Universities.

SPECIFICATIONS :

The **EID 002** module includes :

- 19 input variables :

Main road

- ◆ 2 independent lights
(2 Red, 2 Yellow, 2 Green)
- ◆ 2 combined pedestrian lights,
(1 Red, 1 Green)

left slip road

- ◆ 2 independent lights,
(2 Red, 2 Yellow, 2 Green).

Secondary road

- ◆ 2 combined lights
(1 Red, 1 yellow, 1 Green),
- ◆ 2 associated pedestrian lights,
(1 Red, 1 Green)

- 5 output variables :

- ◆ 1 pedestrian call for the main road,
- ◆ 1 pedestrian call for the secondary road,
- ◆ 1 car detection for left slip road,
- ◆ 1 car detection for secondary road.

Packing

Weight : 3 Kg

Dimensions : 300 x 250 x 100 mm