



ETR300STI2D DID@VDI



Self-operating laboratory for the introduction to VDI convergence

MAIN CHARACTERISTICS

- Data server: HTTP, FTP.
- Voice server: SIP.
- Video server: IGMP, RTSP.
- Web interface for the services management.
- One or several student PC workstations provided with headset.
- One or several IP videophone (SIP protocol).
- Progressive & detailed practical works.
- Educational animations & MCQs with automatic corrections.

AREAS OF APPLICATION

- Initiation to network architecture & VDI in higher education.
- Vocational programs & technical schools (telecommunications, networks).



The **ETR300STI2D DidaVDI** is a self-operating laboratory, **it is fully isolated from the Internet network**. This specific characteristic enhances five main advantages:

- Mistakes made by the Students **would not cause any damage on the School network**.
- As the laboratory is completely isolated from outside, only the teacher has an access to the selection of videos & images available on the HTTP & FTP server, **this eliminates all risks of intrusion into sensible sites**.
- Network wiring is carried out on a mixing panel in order to **protect the mechanical parts (connectors) of the actuators** (server, router..).
- One single LCD interface enables the « *quick wiping* » of FTP service exchange files.
- One « mirroring » port **enables the monitoring of all network exchanges**.

In its basic version, it is designed for **3 workstations (6 students)**, and can be extended to **9 workstations (sample configuration: 1 set-top box, 1 to 4 SIP phone(s), 1 to 4 client PC(s))**.

ETR340B, Computer cabinet for self-operating laboratory including:

ETR340000, DATA PROCESSING CABINET 12 Units:

- Table-top fitted metal structure.
- 24-port patch panel, including 19 UTP crossings.
- Electrical panel 9 + 4 sockets with differential circuit breaker

ETR341000, DidaVDI: SIP, HTTP, FTP server

Hardware functions:

- Poly945GC-L2 Core2 uATX MB 2xGLAN, 4xSATA, 2DDR2
- Intel DualCore Pentium E5700 CPU 3.0GHz 2M 65W
- 1U Active Blower w/He
- Heatsink, 4GB DDR2 RAM 32bit PCI Flexible Riser Card for 1U
- Mini-1U Rack with Power Supply, HD 2"1/2 60GO SSD extractible, keyboard/LCD display.



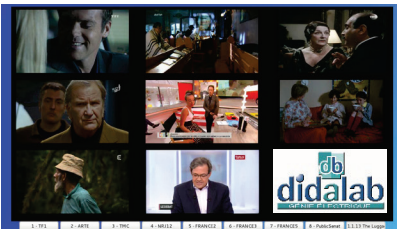
Software functions:

Linux** OS with a set of free programs « **Astérisik****, **Apache**** etc... » for Voice, Data & Image services.

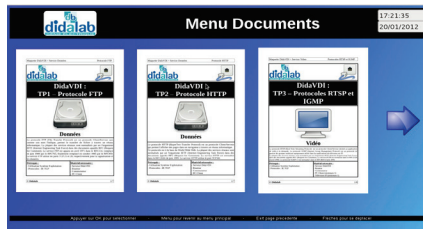
Preconfigured, it ensures the following functions:

Voice Service	Data Service	Images (Video) Service	Server:
SIP account : ➤ On. ➤ Off. ➤ Registers state.	➤ HTTP: On/Off. ➤ FTP: On/Off.	➤ RTSP: On/Off. ➤ IGMP: On/Off.	➤ Network inf., service state. ➤ All services off. ➤ Reset exchange file. ➤ Server start & stop.

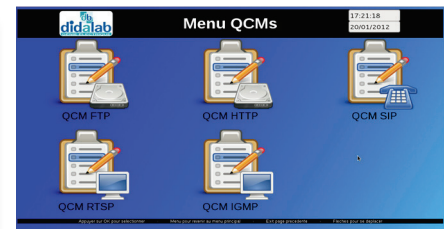
Some examples of services provided by Did@VDI:



Video pattern of 8 channels, duration: 1h30 each.



Set of practicals downloadable from the server.



Training activities & MCQs with self-corrections & automatic assessments.

Rack equipped with, Router (with Wifi gateway) & Switch 8 ports (built in the cabinet):

- 8 ports LAN 10/100/1000 Mbps RJ45.
- 1 port WAN, Firewall SPI.
- Filtering by adresse, FTP, HTTP services etc..
- SIP gateway.
- Protocoles supported: IP, TCP/IP, ICMP, PPOE.
- IP adressng: DHCP (client and server).
- Backup and restoration of the configuration.
- Processor 250 MHz, memory 8MB Flash, 32 MB DRAM.



ETR350B, « VoIP telephony/videoconference » pack including:

ETR350000: Videoconference telephone

- 4,3-inch LCD color screen , 1,3-Megapixel CMOS video camera, compatible with video H.263.
- Control of 6 SIP direct lines, 2 Ethernet RJ45 ports, 10 / 100 Mbps, Wifi connection.
- 6-customer conference, hand-free Full Duplex with echo withdrawal.
- Broadband sound, RJ9 headphone jack.
- 1 USB 2.0 port + SD / MMC & SDHC card reader, HDMI output.
- Lift-free line connection, call number & name display.
- Off-image, call transfer, “do not disturb”, “hold”, dual call, 4 programmable keys.



ETR360B, « Data transmission » (student PC) pack including:

ETR360000: Vesa Mini PC computer Linux provided with Open Office, Quad-Core 1.5 GHz/2.3 GHz turbo, 1 LAN, Hard disk 500 GB, Ram 4 GB DDR3, Socket Mini PCI,, external mains power supply provided.

Audio/video peripherals control programs installed.

Free programs installed:

- **Nmap****: State of TCP & UDP services.
- **FTP Client****: FTP (file transfer) in command line.
- **FileZilla****: FTP (file transfer) through graphic interface.
- **Iceweasel****: Internet browser.
- **Ekiga****: « softphone » PC program.
- **Ngrep****: TCP/UDP packets analysis.
- **VLC****: multimedia player.
- **Wireshark****: network protocols analysis.

External connections: 3 USB, RJ45, SPDIF, , HDMI, VGA, DC-IN, Jack.

21,5-inch LCD screen, 1680x1050 full HD, HDMI input, loud-speakers, embedded Webcam.

Keyboard & mouse

Audio-ponic headset



ETR370B, « Image & Video » pack including:

Complete set enabling the study of the Video operation on « VOD » (Video On Demand):

Set-Top Box: IP/HDMI transcoder with its remote control.

HD 21.5" screen: built-in loud-speakers with HDMI input.

HDMI cable, UTP lead 5m, power supplies.



STANDARD CONFIGURATION:

ETR300STI2D: Pack « Did@VDI, self-operating laboratory to become familiar with VDI convergence ».
Designed for 2+1 pairs (expandable to 9) including:

Reference	Designation	Qty
ETR340B	Did@VDI workstation pack for self-operating laboratory:	1
ETR340000	Computer cabinet 12 U to be set on a table, locking sides & door, including: 1 shelf equipped with (1x) 8-port switch, (1x) 4-port router (with Wifi gateway), (19x) UTP leads. 1 mixing panel 16 ports labeled by color par colour codes yellow green blue, crossings. 1 sliding drawer, 2U, rackable for telephone, remote control & leads. 1 connection block 4+6 sockets with differential circuit-breaker, On/Off. 5 black blank sides 1 U.	1
ETR341000	Did@VDI network emulator, SIP, HTTP, FTP server, leads, UTP, HMI with drop-down menu.	1
ETR340600	Set of accessories: 10 UTP leads (100 Ohms) category 6 length 50 cm.	1
ETR300041	Practical works manual.	1
ETR350B	« IP telephony » basic pack including:	1
ETR350000	Telephone/videophone over IP, full-graphics color display (SIP protocol), configured equipment, Power supply and its connection, UTP leads (1x) 5m and (1x) 2 m.	1
ETR360B	« Data transmission » (student PC) basic pack including:	1
ETR360000	Vesa Mini PC under Linux, 2 USB, 1 LAN, alimentation, audio/video peripheral drivers installed, with: 21-inch HD screen (1680*1050), HDMI input, loud-speakers, embedded Webcam, audio-ponic microphone & headset, USB keyboard/mouse, UTP lead 5 m.	1
ETR370B	« Image & Video (via TCP/IP) » pack including:	1
ETR370000	Set-top Box (STB) adaptor interface server HTTP/FTP to HDMI, HDMI cable, STB remote control. 22-inch HD screen (1680*1050), HDMI input, loud-speakers, mounting feet. USB Qwerty keyboard, UTP lead 5m.	1

PACKING:

Net/Gross DIMENSIONS:

Width, Height, Depth: 100/100/140 cm Weight: 70 kgs

Non contractual document
**Trademarks